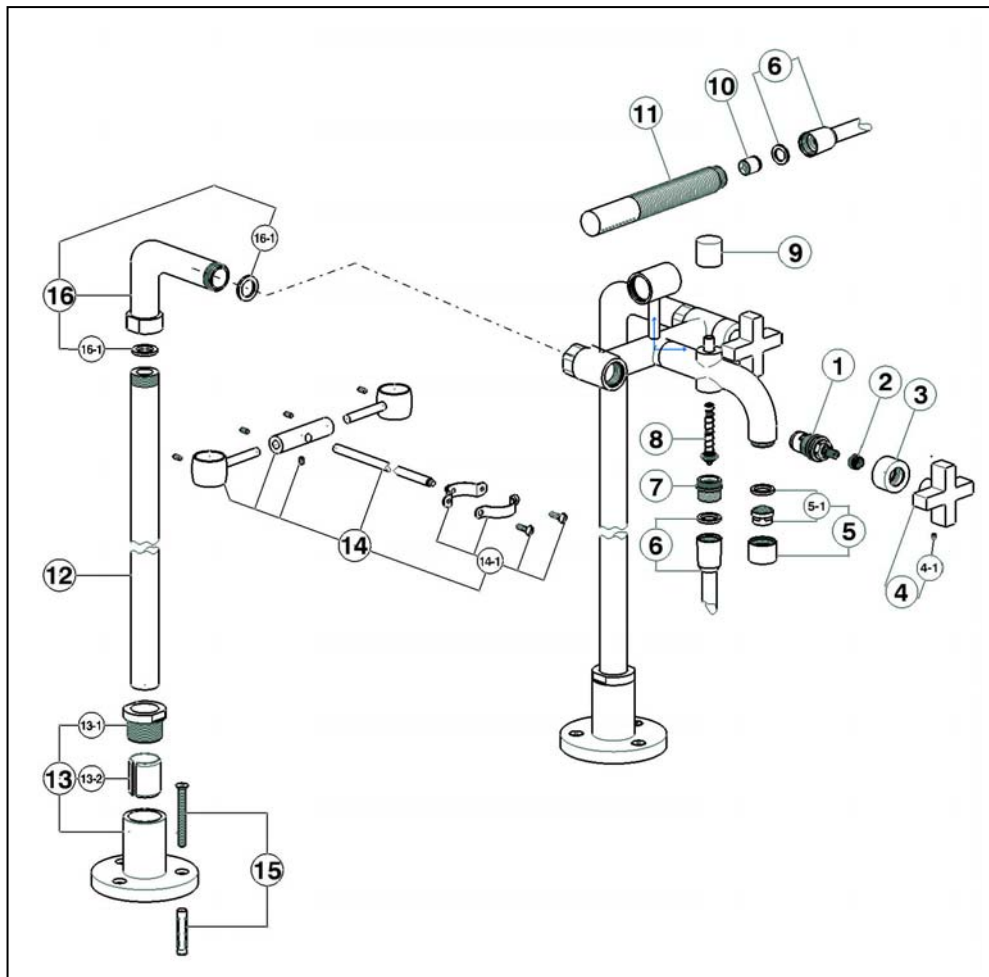


## SPARE PARTS FOR ART. BA104200



POS.	DESCRIPTION	CODE
1	Ceramic headvalve 1/2" right 90°	ZZ 92907 0
2	Complete broached reduction piece	ZZ 93330 0
3	Escutcheon BA	ZZ 93327 0
4	Handle BA for single hole mixer	ZZ 93705 0
4-1	Screw stainless steel M.4x4	ZZ 93328 0
5	Mousseur M.22x1 IC Cascade	ZZ 93284 0
5-1	Mousseur cartridge M.22x1 Cascade	ZZ 93318 0
6	Flex D.14x150 1/2"x1/2"	ZA 00903 0
7	Flexible connection	ZZ 93554 0
8	Complete diverting rod	ZZ 93314 0
9	Knob for diverter	ZZ 93329 0
10	Back flow valve Ø15	ZZ 92956 0
11	Minimal handshower	DS 01409 0
12	G1/2" NPT floor pillar leg	ZZ 94355 0
13	Base for floor pillar leg	ZZ 94356 0
13-1	Fixing ring	ZZ 94357 0
13-2	Cut bush	ZZ 94358 0
14	Waste tube connection	ZZ 94083 0
14-1	Waste tube connection	ZZ 94127 0
15	Installation set G1/2" NPT	ZZ 94343 0
16	90° union pillar leg	ZZ 93750 0
16-1	Gasket NBR 90 SH. 24x16x2,7	ZZ 92689 0