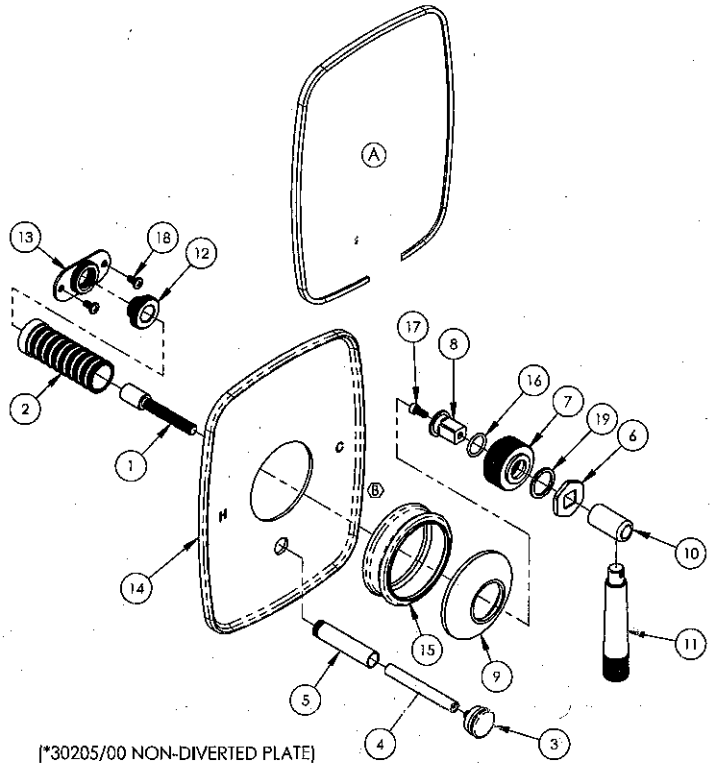


MB2038DM MB2038LM MB2039DM MB2039LM INSTALLATION INSTRUCTIONS

ITEM NO.	PART NUMBER	DESCRIPTION
1	10332	20 POINT BROACH EXTENSION
2	10334	M24X1.0 EXTENSION
3	30128/00	KNOB TRIM, DIVERTER
4	30129/00	EXTENSION TRIM, DIVERTER
5	30132/00	SLEEVE, EXTENSION KIT M10X0.5
6	30177/00	HEX HANDLE BOTTOM, MB PD2
7	30178/00	HUB FOR HANDLES, MB GRACELINE
8	30179	STEM 20PT MB GRACELINE
9	30180/00	ESCUTCHEON BASE, MB GRACELINE
10	30181/00	HUB, HANDLE LEVER MB GRACELINE
11	30182/00	HANDLE, LEVER MB-PD2
12	30204	PB ALL-THREAD ADAPTOR
13	30206	MOUNTING BRACKET (P28001)
14	30207/00 *	TRIM PLATE, GRACELINE MB PB W/ DIVERTER
15	30349/00	HUB EXTENSION, MB GRACELINE
16	90015	O-RING, 9/16"ID X 11/16"OD X 1/16"THK, AS-568-015
17	92013	SCREW, SOCKET HD CAP 8-32 THREAD, 3/8" LENGTH
18	92034	M4 X 0.7 - 8MM PHILIPS PAN HEAD SCREW
19	92053	WASHER, .70"ID X .88"OD X .063"THK



(*30205/00 NON-DIVERTED PLATE)

Trim Parts Instructions:

- Mount **Sealing Gasket (A)** onto **Faceplate (3)**
(Leave a small gap at the bottom allowing any moisture to drain)
- Remove the **Plastic Driver *** as shown in **FIG 1** (NOT USED IN THIS APPLICATION)
- Thread on **Diverter Rod (6)** if applicable
- Install the **Valve Adapter *** (8) as shown in **FIG 1**
- Insert the **Thread Adapter (7)**, **Extension (2)** and **Stem (1)**
- Extension length 3/4" from finished wall
- Stem length 1-3/8" to 1-5/8" from finished wall
- Line up the **Faceplate (3)** using the **Extension (2)** followed by the **Escutcheon**
- Use the **Knurled base of the Handle (4)** to tighten everything in place
- Thread on **Diverter Button (5)** if applicable
- Test and adjust if necessary

