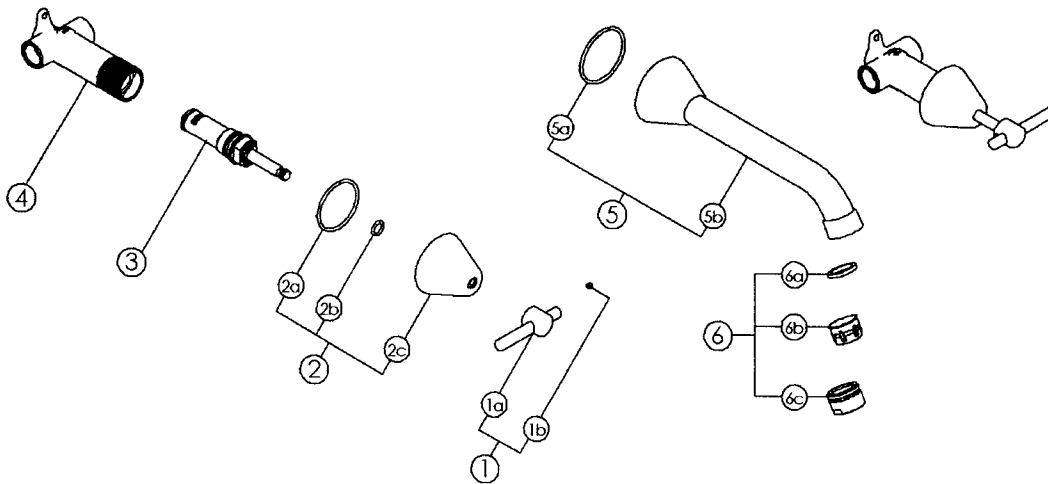


## R2008LM Spare Parts

### R2008LM



N/A means you don't need a part number because it's incorporated in the larger assembly.

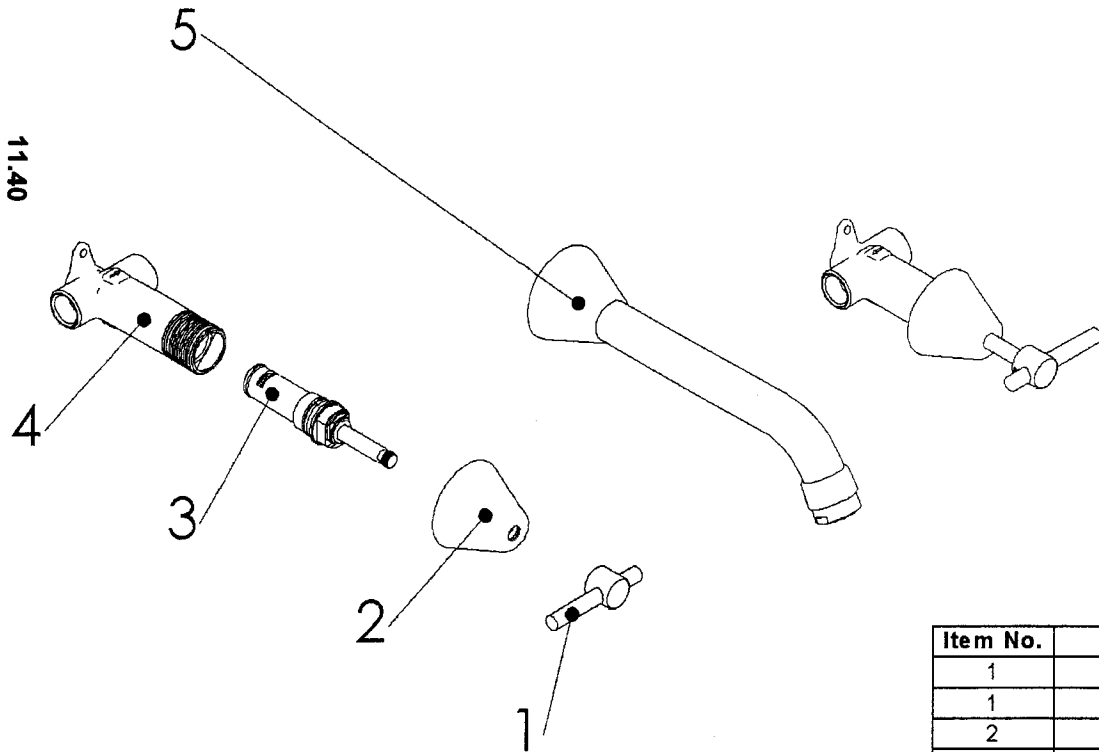
Item	Description	Part No
1	Lever handle complete with grub screw	R9432400*
1a	Lever handle	N/A
1b	M4 x 6 grub screw	R942765
2	Escutcheon including 'O' rings	R9437500*
2a	Escutcheon (no 'O' rings)	N/A
2b	A-110 'O' ring	R9200110
2c	A-132 'O' ring	R9200132
3	Ceramic cartridge assembly 1/2" COLD	R9400664*
3	Ceramic cartridge assembly 1/2" HOT	R9400667*
4	Wall mounted volume control 1/2" body	R945816
5	Wall mounted tub spout 9" complete with 'O' ring	R9458260*
5a	A-134 'O' ring	R9200134
5b	Wall mounted tub spout 9"	N/A
6	28mm Aerator complete	R942614*
6a	Flat washer	N/A
6b	28mm aerator insert includes flat washer	R9426140
6c	Aerator cone	N/A

\* Items available in Polished Chrome, Satin Nickel

Consult your local Rohl showroom for additional information and specifications. For complete warranty details and a list of showrooms, go to [www.rohlhome.com](http://www.rohlhome.com).

# ROHL MODERN WALL MOUNTED TUB SET 9" SPOUT LEVER HANDLE R2008LM

11.40



Item No.	Description	Part No.	Finish
1	Lever handle	R9432400APC	Polished Chrome
1	Lever handle	R9432410STN	Satin Nickel
2	Escutcheon	R9437500APC	Polished Chrome
2	Escutcheon	R9437510STN	Satin Nickel
3	Ceramic cartridge assembly 1/2" COLD	R9400664APC	Polished Chrome
3	Ceramic cartridge assembly 1/2" COLD	R9400665STN	Satin Nickel
3	Ceramic cartridge assembly 1/2" HOT	R9400667APC	Polished Chrome
3	Ceramic cartridge assembly 1/2" HOT	R9400668STN	Satin Nickel
4	Wall mounted volume control 1/2" body	R945816	
5	Wall mounted tub spout 9"	R9458260APC	Polished Chrome
5	Wall mounted tub spout 9"	R9458261STN	Satin Nickel